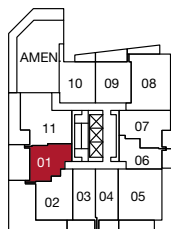


georgetown 2

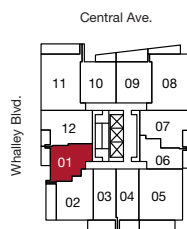
b plan

1 bedroom

indoor: 453 sq ft
 outdoor: 60-245 sq ft
 total: 513-698 sq ft



level 3



levels 4-31



The developer reserves the right to make changes and modifications to the information contained herein. Floorplans and floorplates are subject to change without notice. Please contact a developer sales representative for details. This is not an offering for sale, as an offering can only be made after the filing of a disclosure statement, and only in jurisdictions where qualified in accordance with applicable local laws. E.&O.E.

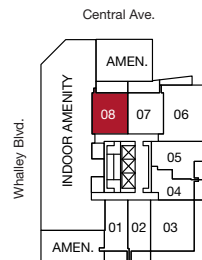
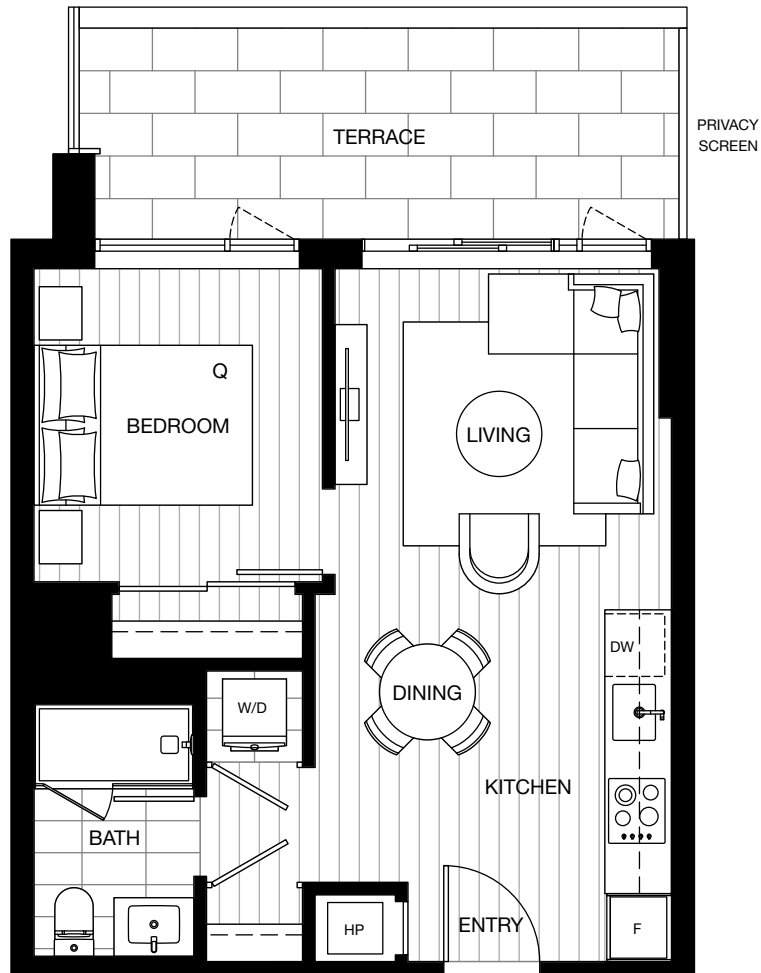


georgetown 2

b1 plan - 208

1 bedroom

indoor: 485 sq ft
outdoor: 129 sq ft
total: 633 sq ft



level 2



The developer reserves the right to make changes and modifications to the information contained herein. Floorplans and floorplates are subject to change without notice. Please contact a developer sales representative for details. This is not an offering for sale, as an offering can only be made after the filing of a disclosure statement, and only in jurisdictions where qualified in accordance with applicable local laws. E.&O.E.

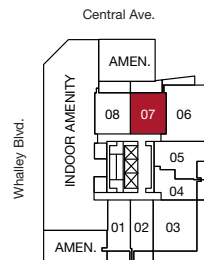


georgetown 2

b1a plan - 207

1 bedroom

indoor: 478 sq ft
outdoor: 124 sq ft
total: 602 sq ft



level 2



The developer reserves the right to make changes and modifications to the information contained herein. Floorplans and floorplates are subject to change without notice. Please contact a developer sales representative for details. This is not an offering for sale, as an offering can only be made after the filing of a disclosure statement, and only in jurisdictions where qualified in accordance with applicable local laws. E.&O.E.

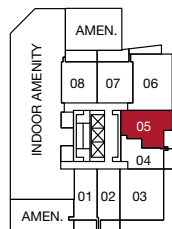


georgetown 2

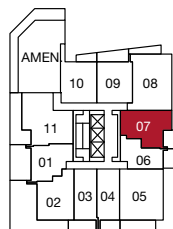
b2 plan

1 bedroom

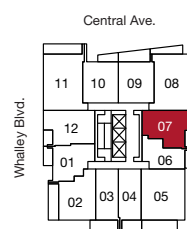
indoor: 533 sq ft
 outdoor: 71-72 sq ft
 total: 604-605 sq ft



level 2



level 3



levels 4-31



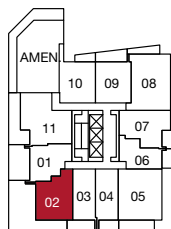
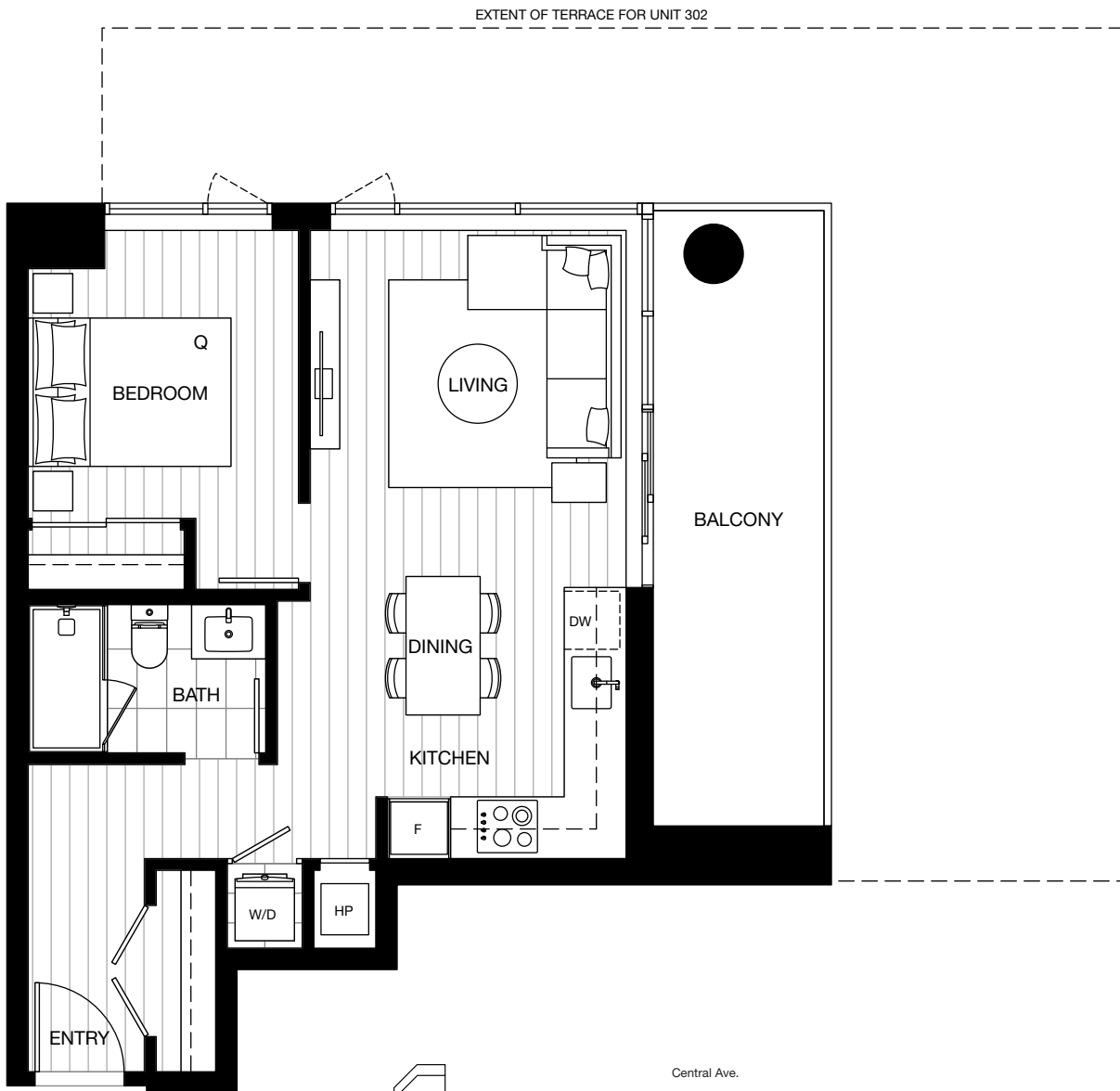
The developer reserves the right to make changes and modifications to the information contained herein. Floorplans and floorplates are subject to change without notice. Please contact a developer sales representative for details. This is not an offering for sale, as an offering can only be made after the filing of a disclosure statement, and only in jurisdictions where qualified in accordance with applicable local laws. E.&O.E.

georgetown 2

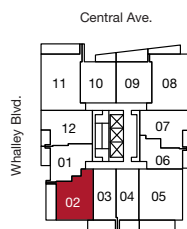
b3 plan

1 bedroom

indoor: 559 sq ft
outdoor: 124-548 sq ft
total: 683-1,107 sq ft



level 3



levels 4-31



The developer reserves the right to make changes and modifications to the information contained herein. Floorplans and floorplates are subject to change without notice. Please contact a developer sales representative for details. This is not an offering for sale, as an offering can only be made after the filing of a disclosure statement, and only in jurisdictions where qualified in accordance with applicable local laws. E.&O.E.

